

vibbel

0009371

# Khona Radio 1

Monopolar Radiofrequency / Radiofrecuencia monopolar /  
Radiofréquence monopolaire / Radiofrequenza monopolare / Radiofrequenz monopolar



|    |    |
|----|----|
| EN | 2  |
| ES | 5  |
| FR | 9  |
| IT | 13 |
| DE | 17 |

DDUUEETT EUROPE would like to thank you for choosing Vibbel products. We hope that this instruction manual will help you get the most out of this product.

If you have any doubts regarding its use and/or operation, please contact your distributor.

## BEFORE USE

- Please read the entire instruction manual carefully before using the product. Take note of any warnings included in this manual.
- Always keep this instruction manual handy and if you give the device to another person, hand over the manual as it is an essential part of the product.
- Some components of the product may differ from the image that appears in catalogues, websites, brochures, etc.
- In order to enhance the product, the manufacturer reserves the right to modify its features and/or components without prior notice.

## CORRECT USE OF THE DEVICE

- This product has been designed to be used by beauty professionals at beauty salons and should not be used for other purposes.
- Please note that any misuse of the device entails the loss of the guarantee.
- Do not make any modification to the device without the authorisation of DDUUEETT EUROPE SL.
- DDUUEETT EUROPE SL shall not be held liable for any material or personal damage due to the misuse of the product.

## CONTRAINDICATIONS

- This product should not be used on:
  - People who suffer from deep vein thrombosis.
  - People with pacemakers or acute heart failure.
  - People with high blood pressure.
  - Pregnant women.
  - People with wounds or injuries in the area to be treated.
  - People with pain, irritation, pins and needles, cramp or numbness in the area to be treated.
  - People with metal implants.
- Not recommended for cancer patients or people with an overactive thyroid.
- The following should check with their doctor:
  - People with skin disorders.
  - People undergoing medical treatment or a diagnostic process.

## PRECAUTIONS

- Before using it for the first time and after each use, check the device and the mains cable for any damage.
- Unplug the device from the mains before starting to clean it or undertaking any type of maintenance.
- Do not use the product outdoors or in places where it may be affected by humidity or inclement weather.
- If the power supply cable is defective, unplug the appliance immediately and inform your dealer or specialised technician.
- Position the power supply cable properly so that people cannot trip over it and make sure you plug it into an earthed socket.
- At the end of the working day, disconnect the device and unplug the power supply cable from the mains.
- If you detect any anomaly in the operation of the product, please contact your distributor or specialised technician.

## SAFETY INDICATIONS

- The device and accessories should be kept out of the reach of children.
- Only plug the device into a properly installed socket. The local mains voltage must correspond to the technical specifications of the device.
- The power socket must be accessible in case you have to quickly unplug the device at any given time.
- Always pull out the actual plug and not the mains cable.
- Never tamper with any electrical component or open up/repair any component of the device.
- Only your distributor or specialised technician should repair the device.
- Do not switch on the device if there is visible damage to it or to the mains cable.
- Never touch the device or the mains cable with wet hands.

## CONTENTS

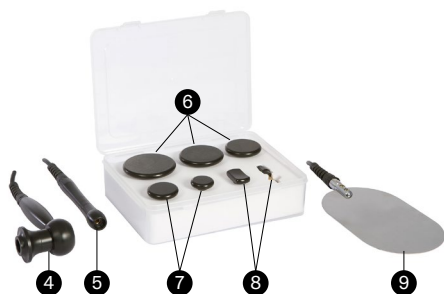
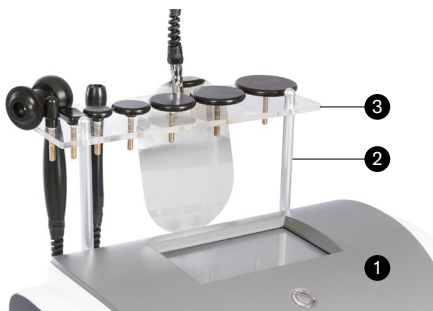
- Main body x 1 unit
- Power cable x 1 unit
- Body handpiece x 1 unit
- Face handpiece x 1 unit
- Body heads x 3 units
- Face heads x 2 units
- Eye area heads x 2 units
- Negative electrode plate x 1 unit
- Threaded tip bar x 2 units
- Methacrylate plate for accessory holder x 1 unit

- Fuse x 2 units
- Instruction manual x 1 unit

## TECHNICAL SPECIFICATIONS

|                          |                          |
|--------------------------|--------------------------|
| Product                  | Monopolar Radiofrequency |
| Reference                | 0009371                  |
| Voltage                  | AC 200-240 V~            |
| Input frequency          | 50 Hz                    |
| Power                    | 150 W                    |
| Output Frequency         | 500 kHz                  |
| Achievable working depth | 2 cm                     |
| Dimensions               | 44 x 31 x 35 cm          |

## COMPONENTS

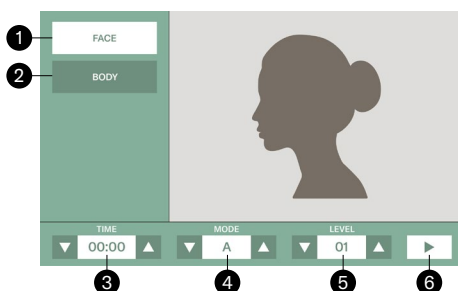


- 1 Main body
- 2 Threaded tip bar
- 3 Methacrylate plate for accessory holder
- 4 Body handpiece
- 5 Face (and eye area) handpiece
- 6 Body heads
- 7 Face heads
- 8 Eye area heads
- 9 Negative electrode plate

## CONTROL PANEL

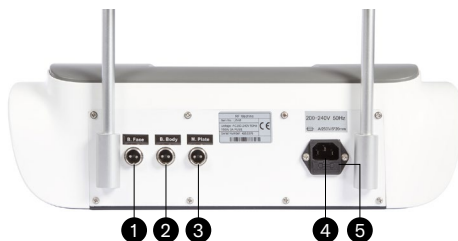


- 1 On / Off button
- 2 Display screen and parameter control



- 1 Selection of function to use: face
- 2 Selection of function to use: body
- 3 Time display and adjustment
- 4 Mode display and adjustment
- 5 Display and setting of work intensity
- 6 Start or Pause the operation of the machine

## REAR PANEL



- 1 Face handpiece connector
- 2 Body handpiece connector
- 3 Negative electrode plate connector
- 4 Electrical power supply connector
- 5 Fuse

## CONNECTION AND ASSEMBLY INSTRUCTIONS

- Screw the 2 threaded tip bars into the rear panel of the main body and fit the methacrylate plate for accessory support.
- Connect the power cable to the rear panel of the main body.
- Connect the face handpiece connector to the rear panel of the main body.
- Connect the body handpiece connector to the rear panel of the main body.
- Connect the negative electrode plate connector to the rear panel of the main body.
- Place the handpieces, negative electrode plate and heads on the methacrylate plate for accessory support.



## POWER AND CONFIGURATION

- Press the on/off button to start the device. When it is on, a beep will sound and the welcome screen will be displayed.
  - Press the screen to move to the next display screen and the parameter control.
- The preset values when switching on the device are as follows:
  - Selection of function to use: face
  - Length of treatment: 30 minutes
  - Operating mode: A
  - Intensity level: 1
- Set the previous parameters
  - Selection of function to use: face / body
  - Length of treatment: maximum 60 minutes
  - Operating mode: A, B
  - Intensity level: 1 - 10
  - Definition of preset modes:
    - Mode A: Continuous wave
    - Mode B: Pulsed wave
- Performing the treatment:

- Apply cream for radiofrequency use across the area to be treated.
- Insert the appropriate head into the corresponding handpiece according to the area to be treated.
- Select the function to use: body or face.
- Set the length of treatment.
- Select the work mode: A or B.
- Set the intensity level to minimum.
- Place the negative electrode plate in such a way that there is good contact with the person who is going to receive the treatment. If this person is lying face up on a bed, you can place it on their back.
- Start moving around the handpiece and set the intensity level according to the treatment to be performed.

### Remember:

Massage with continuous circular movements. Do not stop the massage and avoid leaving the head in contact with the skin at the same point: the user could suffer burns.

Ask the user of the radiofrequency treatment how they are perceiving the sensation of heat applied. Set the intensity level according to their perception.

Apply enough cream for radiofrequency use as many times as necessary during treatment.

## CLEANING AND MAINTENANCE

- Before cleaning the device, unplug it from the mains.
- Clean the device with a soft, dry cloth. Do not use liquids to clean it.
- After each use, the various components and accessories must be sterilised and left to dry.
- For maintenance or repairs of any part of the product, please contact your distributor or specialised technician.

## RECYCLING

If you need to dispose of the product or any of its parts or accessories, please check and respect the laws and regulations applicable to waste management and environmental protection.