



EN

F-815
Instruction Manual
WE-2018-F815

MULTIFUNCTIONAL INSTRUMENT

WARNING

• Never under any circumstances attempt to open or inspect the internal components or accessories of the machine. If an inspection becomes necessary, please contact your supplier or a suitably competent technician.

• Never use the unit in humid or poorly ventilated environments, such as wet rooms, bathrooms, etc. to prevent damage to the electrical components of your unit.

• Never use the unit outdoors; exposure to the elements can cause damage.

• If the power cord was destroyed, please ask a professional to service and replace it to avoid hazards, or contact the dealer for service.

• Do not leave any ultrasound probes switched on whilst unattended, otherwise they may overheat, which could result in damage to the probe or a reduction of its service life.

• Do not attempt to separate the stainless-steel generator from its rubber holder (handle); any attempt to do so may cause irreparable damage to the generator.

EC-DECLARATION OF COMPLIANCE

This product meets the following requirements:

1. Conditions set out in the Low Voltage Directive: 2014/35/EU.

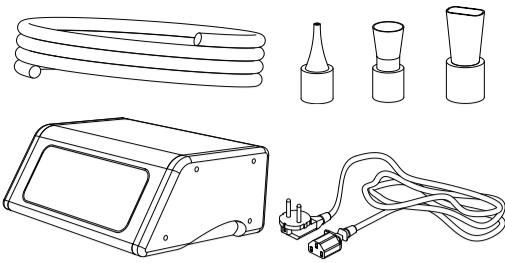
2. Conditions set out in the Electromagnetic Compatibility Directive: 2014/30/EU.

RECYCLING

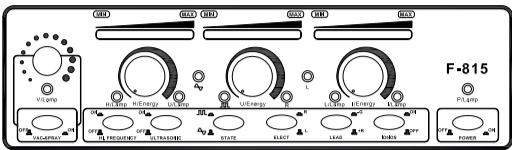
Whenever any of our electrical products or their presentation packaging bear this symbol, it means that these products should not be treated as conventional household waste in Europe. To ensure proper treatment of this waste, dispose of it in accordance with local laws or as required for the disposal of electrical equipment. This initiative will help preserve save natural resources and improve standards of environmental protection in regard to the treatment of electrical waste.

WELCOME!

Thank you very much for purchase. Please read the instructions carefully before operating the instrument. You can also ask a professional for guidance to make sure you are using the instrument correctly. We will accept no responsibility for any accidents that occur due to incorrect operation. The company reserves the right to amend the details of the instruments with no prior notice. If any mistakes are found in these instructions, please feel free to send us an e-mail informing us so that we can correct them.



FRONT PANEL



1. Galvanic handle
2. High frequency handle
3. Face probe
4. Eyes probe
5. Spray pipe
6. Vacuum pipe
7. Feeder cable

INSTRUCTIONS OF USE

1. Connect the power supply via the rear panel, indicated in the sketch as "POWER LINE INPUT".

2. Connect the accessories properly to the front/rear panel as indicated in the sketch.

3. Turn on the "POWER" button.

HIGH FREQUENCY

1. Select the proper glass electrode pipe and insert the metal cap end into the output mouthpiece of the handle (try not to touch the glass electrode with your hands or any metal objects).

Glass electrode pipe assignment position:

a. Mushroom-shaped electrode pipe used for large areas of skin: face, forehead, neck, etc.

b. Ladle-shaped electrode pipe used for medium areas of skin: chin, etc.

c. Ball-like electrode pipe used for small areas of skin: nose, etc.

d. Straight electrode pipe used for indirect treatment.

2. Switch the unit on by pressing the "H. FREQUENCY" button and make sure the "H/ENERGY" is set to the minimum.

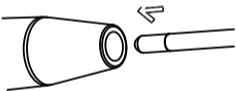
3. Touch the treatment area with the glass electrode. You can then slowly adjust the output using "H/ENERGY".

4. During the course of the treatment, when changing electrodes you should return the output to the minimum level before swapping the electrodes, and then slowly adjust the energy level and return in to the appropriate intensity required.

5. At the end of the treatment, slowly reduce the "H/ENERGY" level to the minimum output and then switch the "H. FREQUENCY" button off before removing the electrode from the customer's face.

INDIRECT USAGE

1. Select the straight glass electrode and insert the metal cap end into the output mouthpiece of the handle.



2. Give the handset to the customer, making sure they hold the glass electrode and not the handset.

3. Switch on the unit by pressing the "H. FREQUENCY" button and make sure the "H/ENERGY" is set to the minimum.

4. Slowly adjust the output using "H/ENERGY".

5. Carry out the facial massage or treatment using the prescribed product as required. During the whole treatment process, make sure you do not touch or come into contact with the glass electrode being held by the customer.

6. At the end of the treatment, slowly reduce the "H/ENERGY" level to the minimum output and then switch the "H. FREQUENCY" button off.

CAUTIONS

• The glass electrode pole will sparkle when it is still less than one inch away from the skin with the instrument switched on. In this case, reduce the energy of the high frequency unit. If the customer still feels the sparkle, they may cover their face with a small, dry cotton towel but never with a nylon or synthetic one.

• Before removing the glass electrode from the skin, decrease the "H/ENERGY" to its minimum setting, then switch the power off before removing it from the skin.

• Customers should not be allowed to wear any metal objects or jewelry; all items must be removed prior to beginning any treatment.

• High-frequency treatments should not be carried out on pregnant women, or any persons using a pace-maker (or any electrical or rhythmic heart-regulating device).

• The products used with the high-frequency treatment must not contain any alcohol or spirit-based substances in order to prevent accidental combustion from arcing.

• Never touch the inner eye (eyeball) area with any high-frequency electrode.

• Only hold the handle of the high-frequency handset.

ULTRASOUND

BEFORE TREATMENT:

1. Cleanse/tone the treatment area using the prescribed skin-type products.

2. Remove any left-over product by facial steam for 10 minutes.

3. Cleanse the treatment area again to remove any dirt or debris from the face in order to prevent the ultrasound waves from pushing it back into the dermis.

4. Tone every part of the face (or treatment area) gently using a suitable astringent.

5. After wiping off the astringent, the skin will be thoroughly cleansed for optimum protection.

6. Apply enough conductive gel to the treatment area.

STARTING TREATMENT:

1. Adjust the intensity via the "U/ENERGY" regulator. You should start at 3 – 4 blocks on the LCD display.

2. Press the "ULTRASOUND" button to begin.

3. Select the desired wave state by switching the "STATE" button. There are 2 kinds of wave state: continuous wave and combined wave.

1. Select the desired output port by pressing "SELECT". "R" is for the right port and "L" is for the left port.

2. Massage the treatment area where the conductive gel has been applied using small circular motions to cover the whole treatment area. Treatment time will vary depending on the size of treatment area. A standard (complete) facial area should take 10-15 minutes of repetitive massage.

3. After completing the treatment, switch off the output and return the probe to its holder.

NOTES

• Always make sure enough conductive gel is applied for at least 15 minutes of treatment time.

• Generally, lower outputs are used for facials and higher outputs for body treatments.

• If the treatment area is small or sensitive, use the eye probe and make sure that the energy output is limited to 5-7 blocks (on the "ENERGY" LCD screen display). The treatment time may also be reduced to 8-10 minutes.

• A standard treatment course lasts around 10 sessions in total, with a minimum resting period of 1 day between sessions. If other facial treatments are being conducted on the same area, a minimum rest period of 7 days should be observed between treatments.

CAUTIONS

• Never use on dry skin.

• Do not use on the stomach area of pregnant women.

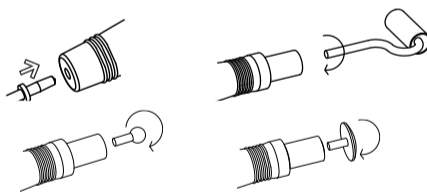
• Do not use on people with pace-makers (any electrical or rhythmic heart-regulating device).

• Do not use on people with known heart conditions.

• Always use ultrasonic electrodes with enough moisturizer or serum on the skin.

• Ultrasonic treatment is suitable for all skin types. The massage time and machine settings can be adjusted for each different skin type. For sensitive skins, reduce treatment time to 3-5 minutes and make sure the power setting is at the lowest level to start with.

GALVANIC



CONTRAINDICATIONS

- Pacemaker (any electrical or rhythmic heart-regulating device)
- Pregnancy
- Thrombosis/Phlebitis
- Skin diseases
- Operations (within the last 6 months)
- Silicone implants
- Hypersensitive or vascular skin

BEFORE TREATMENT:

1. The treatment area must be washed and dried before any products can penetrate into the tissue.

2. The customer holds the metal pole and the therapist holds the handle of the roller.

3. The polarity of the probes can be changed by adjusting the "LEAD" button between (+R) or (-G).

Positive pole (anode)	Negative pole (cathode)
+R	-G
Roller/ball (+), metal pole (-)	Roller/ball (-), metal pole (+)
Acid pH solutions	Alkaline pH solutions

4. Cover the roller/ball with a piece of cotton or a sponge that has been dipped into a suitable lotion (according to the treatment). The lotion can also be applied directly to the skin.

STARTING TREATMENT:

1. Turn on "IONOS" and ensure that "I/ENERGY" regulator is set to the minimum output setting.

2. Select the operation by pressing "LEAD".

3. Touch the treated part with the roller/ball.

4. Slowly adjust "I/ENERGY" to the appropriate intensity at which the customer feels a gentle sting. Smoothly slide the roller. The cotton must retain its moisture all the way for the best effect.

CAUTIONS

• Always make sure customers remove any jewelry, and confirm that they have not had any metal implants (pins, joints, etc.) installed since their last treatment.

• Pregnant women and people with sensitive, injured, inflamed skin or blood capillary expansions should not receive this treatment.

• Customers with health issues such as heart disease or infectious diseases and hyper-allergic or hyper-sensitive skin (see contra-indications) may not use this instrument.

• Always make sure the skin surface has been moistened with plenty of conductive product.

• During use, the roller must not be touched by the metal pole. If any accidents happen, the instrument must be protected and the output switches off automatically. At this moment, switch off the "I/Energy" and restart it by switching on the "I/Energy". When powering off the instrument, please switch off the "I/Energy" first and then the "IONOS".

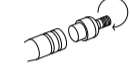
VACUUM & SPRAY

VACUUM

1. Connect the opposite side of the pipe to the vacuum handle. Put the small glass vacuum pipe to be used in the handle. There are three types of small glass vacuum pipes.



2. Check that the foam filter is in its proper position in the handle.



3. Turn on the "VAC-SPRAY" button on the front panel.

4. You can adjust the suction effect by covering or uncovering the hole in the side of the handle with your finger.

NOTES

• Normally the operation should not last more than 5 minutes. If the instrument overheats, turn off all the buttons and restart after 10 minutes.

SPRAY

1. Fill the spray bottles with the proper liquid. There are two spray bottles, which can contain different liquids.

2. Connect the opposite side of the pipe to the spray bottle.



3. Turn on the "VAC-SPRAY" button on the front panel.

4. You can adjust the spray effect by covering or uncovering the top hole of the bottle with your finger.

NOTES

• Spray downwards from the forehead during operation. Stop the liquid from going into the nose. Ask the customer to close their eyes and shut their mouth.

• Maintain an adequate distance from the face whilst spraying so that the effect is felt as a gentle mist landing on the skin.

• Normally the operation should not last more than 5 minutes. If the instrument overheats, turn off all the buttons and restart after 10 minutes.

CAUTIONS

• The pressure regulator can be unscrewed completely. If it happen accidentally, you can screw it back and the machine will still work correctly.

• Do not leave the handle on the same part of skin for too long since it can cause injuries.

• Avoid using in on irritated skin.

• Always make sure the spray pipe is connected to the right nozzle of the machine, to prevent accidental vacuuming of any spray solution into the pump, which can damage the pump of your machine and void your manufacturer's warranty.

• Do not work the vac/spray pump for extended periods without cool-down time between treatments in order to prevent over heating of the pump and damage to the machine. Damage caused by overheating of the pump is not covered by the manufacturer's warranty.

FAQ

ULTRASOUND

Check the following if the work unit switches on but the probes do not emit.

• Put a drop of water on one probe.

• Switch on the unit and slowly increase the output energy.

• If the water starts to move and evaporate, the unit and the probes are working properly. If not, the probes are not working properly.

The unit and the probes are working properly but the customer doesn't feel any effects.

• Make sure enough conductive gel has been applied to the treatment area.

GALVANIC

Check the following if the rollers on the probe fail to rotate.

• Dismantle and clean thoroughly.

• If the roller still fails to rotate freely, contact your sales agent.

MAINTENANCE

HIGH FREQUENCY

• Glass electrode pipes must be kept clean and dry, and should be sterilized before or after each use.

ULTRASOUND

• The ultrasound probes should be cleaned using clean water (not hot) and a clean, soft cloth and then chemically sterilized using an appropriate sterilization fluid. Dry the probe carefully after sterilizing and store it safely in its holder on the trolley in between uses. Always sterilize the probes again prior to use.

• Never immerse the probe in any fluid!

GALVANIC

• Take care not to damage the probe rollers. Never use abrasive substances to clean the probe rollers, since damage to the surface of the roller may scratch the surface of the skin during treatment; any damaged areas may also harbor bacteria and make sterilization more difficult.

• After treatment, all metal roller parts must be cleaned, sterilized and dried. Then store them in the accessory holder to avoid any damage.

VACUUM & SPRAY

• The foam filter in the handle needs to be changed after every 5 treatments. Dismantle the handle and replace the filter. Then reassemble the handle.

ACCESSORIES

REF.	DESCRIPTION
10009	ELECTRODE 1
10010	ELECTRODE 2
10011	ELECTRODE 3
10012	ELECTRODE 4
10024	SPECIAL ELECTRODE 1
10025	SPECIAL ELECTRODE 2
10026	SPECIAL ELECTRODE 3
10040	HIGH FREQUENCY HANDLE
10037	EYES PROBE SMALL
10038	FACE PROBE SMALL
10004	GALVANIC HANDLE
	GALVANIC WIRES
10029	PIPE
10033	SPRAY BOTTLE
10028	VACUUM HANDLE
10027	VACUUM HEAD 1
	VACUUM HEAD 2
	VACUUM HEAD 3

TECHNICAL SHEET

Weights and sizes	Packing size (cm)	45x36x18,5
	Gross weight (kg)	7
	Product size (cm)	41x17/24x13

Working characteristics	Working power	70 W
	Working frequency (ultrasound)	1 MHz
	Working power (ultrasound)	0,01 - 0,5 W/cm2 0,04 - 1,5 W/cm2
	Working frequency (high freq.)	250 KHz
	Working power (galvanic)	5 W
	Working intensity (galvanic)	380 - 1000 micro Amperes
	Vacuum pressure	0 -- -0,075 MPa

Electrical characteristics	Rated voltage	220V ~ 240V
	Frequency	50Hz/60Hz
	Rated power	80 W

© 2018 Weelko

Visit our website at www.weelko.com for more information
Importer: Weelko Barcelona, S.L.
ESB65397556